

INSTRUCTION  
MANUAL

REMOTE CONTROL  
**ACQUA**

**1200**  
LONG RANGE



**JFA**  
ELECTRONICOS

## PRESENTATION

The **ACQUA 1200 CONTROL** is water resistant<sup>1</sup>, with protection equivalent to IP67 certification, which ensures greater safety when performing day-to-day activities without the concern with splashes of water, moisture, sweat or dust. Allows you to control the main functions of the player such as change of music and folder, volume, pause, play and power with **range up to 1200 meters distance**<sup>2</sup>.

It also has in memory the commands of the main equipment in the market and also has the **LEARN** function, which allows the **ACQUA 1200** control to learn the commands of the original infrared control of the "CD Receiver".

## OPERATION

**Transmitting unit:** Whenever a key is pressed, the blue LED will light up, indicating the transmission. If the LED lights up at a very low intensity or does not light, it indicates the need to replace the BATTERY.

**Receiving unit:** The red LED action will light up, indicating the presence of a valid received signal.

**Note: The central will not work if the coding procedure is not performed.**

1. For the transmitting unit to be water resistant, it is necessary that, during the replacement of the internal battery, the sealing membrane is properly packed. Only the transmitting unit is water resistant.

2. For greater range, install the equipment receiver unit in a location where the antenna is free (or as exposed as possible). The distance reached is up to 1200 meters in open area (targeted)..

## BASIC INDICATIONS AND CONTROLS OF THE TRANSMITTING UNIT



1. Volume Control (+);
2. Volume Control (-);
3. Rewind Music;
4. Forward Music;
5. LED Indicator;
6. Forward next folder;
7. Rewind previous Folder;
8. Play / Pause / ATT;
9. Power / Function changes to aux, CD, USB, radio, etc.).

## BASIC INDICATIONS AND CONTROLS OF THE RECEIVING UNIT



1. RF receiver antenna;
2. LED action, reception indicator;
3. LEARN MODE Key;
4. MEMORY MODE Key;
5. Code IR (see learn mode);
6. Power 12v (black white stripe) and GND (black);
7. Infrared emitter (point to the front of the "player").

## ENCODING A CONTROL

The receiving unit can operate with two transmitters, just to perform steps 1 and 2 of the item "LEARN MODE" to add the new transmitter. This feature is recommended for customers who wish to use, in conjunction with the ACQUA 1200 control, another JFA electronics transmitting unit.

### LEARN MODE

In Learn Mode, the ACQUA 1200 receiving unit learns the functions of the original CD receiver control:

1. Press the "A" key (**indic. 1**) on the ACQUA 1200 receiving unit, the ACTION LED will be permanently on;
2. Press the button on the **ACQUA 1200 (indic. 2)** transmitter unit, which you wish to record, until the **ACTION LED** flashes;
3. Point the original CD receiver control at the Code IR input and press the key you want to record (**indic. 4**) until the action LED **flashes** quickly, and then lights up;
4. Repeat the second and third steps to the other keys until all the desired keys are learned;
5. To complete the learning process, press the "A" key (**indic. 1**) of the **ACQUA 1200** receiving unit or wait 10 seconds to exit **LEARN MODE**.

### MEMORY MODE

In memory mode, the receiving unit uses the codes of the main CD receivers models that it already has stored in its memory. See tables 1 and 2 for more information on supported models.

To select a template, follow the following steps:

1. Press the "M" key (**indic. 3**) on the receiving unit, the ACTION LED will be permanently on;

2. Press the keys on the transmitting unit (**indic. 2**) corresponding to the CD receivers model, according to tables 1 and 2.

**Example:** To encode the sony device control, step 1 must be performed and then pressed the keys (POWER) (+) (<) (-) on the transmitting unit.

Check that the LED will flash as shown in tables 1 and 2.

**Example:** For the SONY device above, the LED will flash once and then 4 times, indicating that model 14 (Sony) has been programmed.

3. After this process is complete, press the "M" key (**indic. 3**) of the ACQUA 1200 receiving unit, or wait 10 seconds to exit **MEMORY MODE**.

## INDICATIONS FOR RECORDING LEARN MODE AND MEMORY MODE

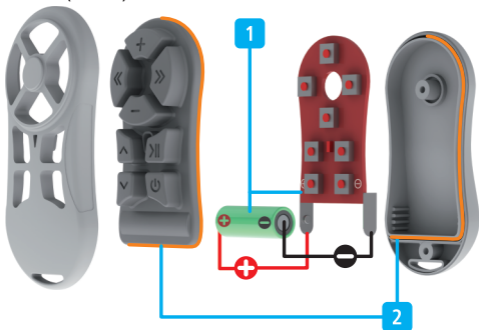


## BATTERY REPLACEMENT

When the transmission LED of the transmitting unit lights up, at a very low intensity or does not light up, the battery may need to be changed. To perform this, remove the two screws on the back of the transmission unit with a small wrench Screwdriver to gain access to the battery.

Replace the battery (the model to be used is the 23A 12V battery) making sure the correct polarity<sup>1</sup>. The correct polarity of the battery connection is indicated on the inner plate of the receiving unit as (+) for the positive pole and (-) for the negative pole (**indic. 1**).

Reclose the back by making sure the seal membrane is correctly positioned on the fixing flaps, ensuring that the control is water resistant (**indic. 2**).



1) Incorrect installation of the battery may cause damage to the control.

## RECOMMENDED RECEIVER INSTALLATION

When installing, the equipment is made through a polarized cable. Make sure that the wire with the white stripe of the receiving unit is connected to the direct battery positive (+12V) and the black wire to the negative (GND).

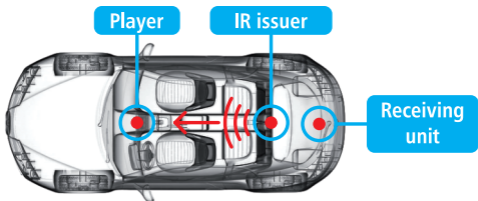
Polarized power cable



Infrared emitter

The receiving unit should preferably be fixed away from metal parts and from the bodywork of the car (which degrades the transmission) while maintaining, whenever possible, the antenna unobstructed to allow the widest possible range of the equipment.

Position the infrared transmitter from the directed receiver unit to the player panel so that there are no obstacles between them. It is recommended to install the receiver unit in the trunk and the infrared emitter in the center of the rear window, pointing to the front of the player. Make sure that the wires are not "bitten" by the mechanical parts of the car when installed.





## TABLE 1 ENCODING MEMORY MODE

NOTE: Keys that must be pressed simultaneously: (◀ ▶) (+ -)

MODEL	CODE	INDICATOR
AIKON - SRC (UP)	(⏻) (-) (+) (◀ ▶)	43
AR70	(⏻) (+) (+) (◀)	05
BOOSTER KIT MULTIMEDIA - SRC (UP)	(⏻) (-) (+) (+ -)	42
BOOSTER 01	(⏻) (+) (+ -) (◀)	29
BOOSTER 02	(⏻) (+) (+ -) (▶)	28
BOOSTER 03	(⏻) (+) (▶) (▶)	22
BOOSTER 7550, 7650	(⏻) (+) (+ -) (-)	26
BOOSTER 7950, 7680, 6850	(⏻) (+) (▶) (-)	20
BOOSTER 8400	(⏻) (+) (▶) (+)	21
BRAVOX BVX-D935U	(⏻) (+) (◀ ▶) (◀ ▶)	37
BRAVOX BVX-D977	(⏻) (-) (+) (-)	38
BRAVOX BVX-D930	(⏻) (+) (-) (+)	09
CYBER1	(⏻) (+) (+ -) (-)	26
CYBER2	(⏻) (+) (+ -) (◀)	29
CYBER3	(⏻) (+) (+ -) (+ -)	30
DSW AUTOMOTIVE DS8705	(⏻) (-) (+) (+)	39
GO TO - MODE (UP)	(⏻) (-) (-) (+)	45
HBD D2000AV / HBD D3000AVN	(⏻) (-) (+) (◀)	41
HBD 7900 AV - MODE (UP)	(⏻) (-) (-) (◀)	47
HBD 8300 BT - MODE (UP)	(⏻) (-) (-) (▶)	46
HBD 9560 - DVD - SRC (UP)	(⏻) (-) (-) (-)	44
HB3000	(⏻) (+) (+) (+)	03
HB4000	(⏻) (+) (+) (▶)	04
HB5100	(⏻) (+) (+) (◀)	05
HB5000, HB6000, HB7200, HB8100	(⏻) (+) (+) (+ -)	06
HB7100	(⏻) (+) (+) (◀ ▶)	07
HB8000	(⏻) (+) (+ -) (◀ ▶)	31
HB9150	(⏻) (+) (-) (▶)	10
HB9700	(⏻) (+) (-) (◀ ▶)	13

## TABLE 1 ENCODING MEMORY MODE

NOTE: Keys that must be pressed simultaneously: (◀ ▶) (+ -)

MODEL	CODE	INDICATOR
HB9750	(⏻) (+) (-) (+ -)	12
HBDVD	(⏻) (+) (-) (-)	08
HBD9200	(⏻) (+) (-) (◀▶)	11
HBD9500, HBD9550AVN, HBD9600AW	(⏻) (+) (-) (+ -)	12
JVC	(⏻) (+) (+) (-)	02
KENWOOD KDC MP2045V	(⏻) (+) (◀▶) (+ -)	19
LG	(⏻) (+) (◀▶▶) (◀▶)	35
NAPOLI 9000	(⏻) (+) (▶▶) (-)	20
NAPOLI 9905	(⏻) (+) (▶▶) (+)	21
NAPOLI 8480	(⏻) (+) (▶▶) (▶▶)	22
NAPOLI 1950, 9981	(⏻) (+) (▶▶) (◀▶)	23
NAPOLI 4203, 4335, 5333	(⏻) (+) (▶▶) (+ -)	24
NAPOLI 9912, 9913	(⏻) (+) (▶▶) (◀▶▶)	25
NAPOLI 9975, 9485, 9486, 9985	(⏻) (+) (+ -) (-)	26
NAPOLI 9480	(⏻) (+) (+ -) (+)	27
NAPOLI 5333, 5133	(⏻) (+) (+ -) (▶▶)	28
NAPOLI 8787	(⏻) (+) (◀▶▶) (+)	33
SONY	(⏻) (+) (◀▶) (-)	14
SONY+	(⏻) (+) (◀▶) (+)	15
PANASONIC	(⏻) (+) (◀▶▶) (-)	32
PHILCO CD230	(⏻) (+) (◀▶) (▶▶)	16
PHILCO DVD500	(⏻) (+) (◀▶) (◀▶)	17
PHILIPS	(⏻) (+) (◀▶) (+ -)	18
PIONEER	(+)	01
PIONEER DVH-7380AV	(⏻) (-) (-) (+ -)	48
POSITRON SP3110	(⏻) (-) (+) (▶▶)	40
POSITRON SP4120AV	(⏻) (+) (◀▶▶) (◀▶▶)	37
ROADSTAR RS-4136	(⏻) (+) (▶▶) (+ -)	24
WEBOX 1300 - MODE (UP)	(⏻) (-) (-) (+)	45

## TECHNICAL SPECIFICATIONS

RECEIVING UNIT	Operating voltage: 9V to 16V
	Stand-by consumption: 13mA
	Polarity reversal protection: YES

TRANSMITTING UNIT	Battery model: A23 - 12V
	Operating frequency: 433.92MHz
	Polarity reversal protection: NO
	Radiated power (3 meters): 0.808mW
	Modulation: ASK

APPROVED PRODUCT



01260-14-04318

"This equipment operates on a secondary level, that is, it has no right to protection against harmful interference, even from stations of the same type, and may not cause interference to systems operating on a primary level."

The ACQUA 1200 control is resistant to spatter, water and dust and has been tested under controlled laboratory conditions, compatible with IP67 certification (maximum depth of one meter for up to 30 minutes). Resistance to splashes, water and dust is not a permanent condition and can decrease over time. Do not attempt to change the battery with the wet ACQUA control. Damage from contact with liquids is not included in the warranty.

If you have any questions, please contact our technical support:  
 suporte@jfaeletronicos.com e suporte2@jfaeletronicos.com  
 +55 (31) 2533-6100

*REMOTE CONTROL*  
**ACQUA**  
**1200**  
*LONG RANGE*



**JFA**  
ELETRONICOS

[www.jfaeletronicos.com](http://www.jfaeletronicos.com)